

Let's take a walk through the heart of the city!

Strolling Around

the Sengen Taisha Shrine (Downtown) Area

Guide to downtown Fujinomiya City. Fujinomiya is full of charm!

Recommended Walking Course Through the City

START

at Fujinomiya Station
Fujinomiya Tourist Association Information Center

First, head to the Tourist Information Center for info!

1 Masudaya Main store

☎0544-26-3380 MAP P19C2

Original Japanese pickles "Soga-duke" are pickled daikon radishes and cucumbers seasoned with *sakokasu* (lees filtered out of sake) as the seasoning base. The sweetness of the *sakokasu* and the spiciness of wasabi give it a distinctly attractive taste.

☎ 8-13 Chuo-cho, Fujinomiya 3 minutes on foot from JR Fujinomiya Station 9:00-19:00
ⓧ Wednesdays 8 spaces



☎ Soga-duke pickles (180 g): 700 yen
☎ Wasabi mayonnaise with Soga-duke pickles: 575 yen



2 Fujinomiya City Office 7th Floor Viewing Lobby

☎0544-22-1408 (Fujinomiya City Urban Development Division, City Planning Division, Landscape Official) MAP P19D2

See unobstructed views of Mt. Fuji and the Fujinomiya cityscape. Enjoy the panoramic view of the expansive plain stretching out beneath Mt. Fuji.

☎ 150 Yumizawa-cho, Fujinomiya 10 minutes on foot from JR Fujinomiya Station No admission fee 8:30-17:15 ⓧ Saturdays, Sundays, national holidays, New Year holidays 312 spaces



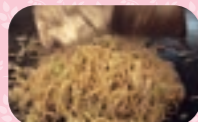
☎ One of the 20 Mt. Fuji viewpoints in Fujinomiya

3 Kokozurayo

☎0544-24-2544 MAP P19B1

A shop full of local specialty products of Fujinomiya. Next door is a Japanese restaurant where you can enjoy Fujinomiya yakisoba and soft serve ice cream.

☎ 1-1 Miya-cho, Fujinomiya 10 minutes on foot from JR Fujinomiya Station 9:00-17:00 ⓧ No holidays (Closed irregularly) Use the parking lot at Fujisan Hongu Sengen Taisha Shrine



☎ Fujinomiya yakisoba : 600 yen

Stroll around with coffee in hand

Caffe kofka (MAP P19C2) faces the Chuo-cho intersection. Grab a caffè latte (600 yen) or any other authentic espresso drink to-go and enjoy a walk around the town. Dine-in seating is available. ☎0544-66-5155 7:30-18:00 ⓧ Mondays



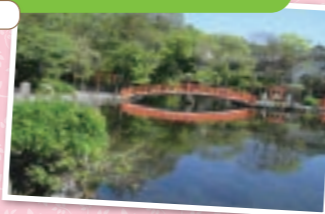
4 Fujisan Hongu Sengen Taisha Shrine

☎0544-27-2002 MAP P19B1

The core of Mt. Fuji spirituality. *Goshintai* (the object of worship) is Mt. Fuji itself. The enshrined deity is Konohana-no-Sakuyahime-no-Mikoto. There are 500 cherry blossom trees planted on the grounds.

☎ 1-1 Miya-cho, Fujinomiya 10 minutes on foot from JR Fujinomiya Station No admission fee 5:00-20:00 (November-February: 6:00-19:00, March and October: 5:30-19:30) ⓧ No holidays 150 spaces (200 yen/hour. Free under 30 min.)

☎ The snowmelt of Mt. Fuji flows into Wakutama Pond
☎ The current main shrine, hall of worship and other buildings were donated by Tokugawa Ieyasu



5 Marukeyz

☎0544-27-0047 MAP P19B1

Famous melon crème chantilly with custard cream, and appleil with raspberry jam starting at 675 yen.

☎ 14-16 Miya-cho, Fujinomiya 15 minutes on foot from JR Fujinomiya Station 8:30-19:00
ⓧ Wednesdays 3 spaces

☎ The price of the melon crème chantilly depends on the season and size of the melon.



6 Fuji Takasago Sake Brewery

☎0544-27-2008 MAP P19A1

Sake brewing since 1830. Brewery tours are free if you make reservations before the day of your visit.

☎ 9-25 Takara-machi, Fujinomiya 16 minutes on foot from JR Fujinomiya Station 9:00-17:00 (Saturdays, Sundays and holidays: 10:00-17:30)
ⓧ New Year 10 spaces



☎ Storage tanks lined up inside the long-standing warehouse

7 Tenjikuya Restaurant, Sake, Sweets and Tea House

☎0544-22-0700 MAP P19A1

This shaved ice shop is run by an ice store that handles pure ice. It sells shaved ice made from its pure ice for a limited time only, starting from 500 yen. The shop's homemade syrups, which have flavors such as Strawberry Annin and boiled peanut, are popular.

☎ 5-8 Nishi-machi, Fujinomiya 5 minutes on foot from JR Nishi-Fujinomiya Station Shaved ice served from 11:00-16:00 (late April to early November) ⓧ Sundays (no holidays between mid-July and the end of August) 6 spaces



☎ Strawberry Annin-flavored shaved ice, one of the most popular items, starting at 1,000 yen

8 Omiya-yokocho

☎0544-25-2061 MAP P19B2 (Mikujii Mochi Honpo)

Back alley streets lined with restaurants and souvenir shops. Outdoor bench and table seating available. You can drink spring water from a well there too.

☎ 4-23 Miya-cho, Fujinomiya 9 minutes on foot from JR Fujinomiya Station 10:00-16:00
ⓧ Different for each shop Parking available nearby

☎ Mt. Fuji spring water containing vanadium

☎ Fuji Sugata, a Center-exclusive Mt. Fuji-shaped *monaka* (Japanese wafer): 1,000 yen for four pieces



☎ Gelato (double): 450 yen

9 Mt. Fuji World Heritage Centre, Shizuoka

☎0544-21-3776 MAP P19B2

A facility for communicating the value of the World Heritage Mt. Fuji. Learn about Mt. Fuji in six themed displays, including Beautiful Mountain and Holy Mountain.

☎ 5-12 Miya-cho, Fujinomiya 8 minutes on foot from JR Fujinomiya Station 300 yen (special exhibition admission fees vary according to the special exhibition) 9:00-17:00 (9:00-18:00 in Jul./Aug.) ⓧ Every third Tue., New Year holiday and facility inspection days Use the Kandagawa Sightseeing Parking Area (paid parking)

GOAL

FINISH at Fujinomiya Station



Main Lodging Facilities in Fujinomiya

☎ Inquiries about accommodations:

☎0544-27-5240 (Fujinomiya Tourist Association)

Fujinomiya Fujikyū Hotel

☎0544-23-6666 MAP P19C2

¥1 night, breakfast included: From 7,800 yen

Fujinomiya Green Hotel

☎0544-23-1919 MAP P19C2

¥1 night, no meals: From 6,000 yen

Super Hotel Fujinomiya

☎0544-22-9000 MAP P18B4

¥1 night, breakfast included: From 7,000 yen

Kuretake Inn Premium Fujinomiya

☎0544-25-1511 MAP P19C2

¥1 night, breakfast included: From 6,700 yen

Kameya Ryokan

An inn where you can enjoy unobstructed views of Mt. Fuji from the baths

☎0544-27-0061 MAP P19B2

¥1 night, breakfast and dinner included: From 13,200 yen

Tachibana Kappo Ryokan (Gourmet Japanese Inn)

☎0544-27-7000 MAP P18B4

¥1 night, breakfast and dinner included: From 24,200 yen

Ogawaso Kappo Ryokan (Gourmet Japanese Inn)

☎0544-26-2197 MAP P19C2

¥1 night, breakfast and dinner included: From 14,850 yen

Fugaku Onsen Hana-no-Yu

☎0544-28-1126 MAP P18B4

¥1 night, breakfast included: From 6,500 yen

Cabin House Yado

☎0544-23-4180 MAP P19C2

¥1 night, no meals: From 2,150 yen

Guest House Tokiwa

☎0544-55-1199 MAP P19C2

¥1 night, no meals: From 5,000 yen

Hotel Crown Hills Fujinomiya

☎0544-23-2222 MAP P19A1

¥1 night, breakfast included: From 5,800 yen

SLEEP.jp fujinomiya

☎050-5532-2884 MAP P19C2

¥1 night, no meals: From 4,450 yen

Kyukamura Fuji

☎0544-54-5200 MAP P18A2

¥1 night, breakfast and dinner included: From 17,500 yen